



Rookwood Way, London, E3

BUTLER & STAG



Guide Price - £450,000 to £475,000
Situated in the vibrant heart of Hackney Wick, this breathtaking modern one-bedroom apartment offers a unique blend of contemporary design and unparalleled views. Situated amidst the burgeoning cultural scene of East London, this property boasts an enviable location with easy access to the canal, promising an exceptional lifestyle for the discerning urbanite.



Leasehold

- One Bedroom Apartment
- Private Balcony
- On-Site Gymnasium
- EWS1 Compliant
- South Facing Duel Aspect
- Canal & Stadium Views
- Modern & Contemporary Throughout
- On-Site Concierge

Duel Aspect Floor-to-Ceiling Windows: The apartment is flooded with natural light and offers panoramic vistas of both the tranquil canal and the dynamic stadium, creating a seamless integration between indoor living spaces and the bustling surroundings.

Spacious Open-Plan Living Area: The open-plan layout optimizes space and functionality, seamlessly integrating the living, dining, and kitchen areas. This versatile space is ideal for both relaxing and entertaining, offering the perfect backdrop for hosting guests or unwinding after a busy day.

Luxurious Bedroom Retreat: The well-appointed bedroom offers a serene retreat from the hustle and bustle of city life. With plush carpeting, ample closet space, and serene views, it provides the perfect setting for restful nights and lazy mornings.

Contemporary Bathroom: The stylish bathroom features designer fixtures, elegant tiling, and a luxurious bathtub/shower combination, offering a spa-like experience where you can unwind and rejuvenate in style.

Balcony: Step outside and soak up the vibrant atmosphere from your private balcony. Whether you're enjoying your morning coffee or savoring a glass of wine at sunset, these outdoor spaces provide the perfect setting to enjoy the breathtaking views and alfresco living.

Prime Location: Located in the trendy neighborhood of Hackney Wick, residents enjoy easy access to an array of amenities, including trendy cafes, artisanal eateries, eclectic boutiques, and cultural hotspots. With excellent transport links, the vibrant neighborhoods of East London are within easy reach, offering endless opportunities for exploration and discovery.

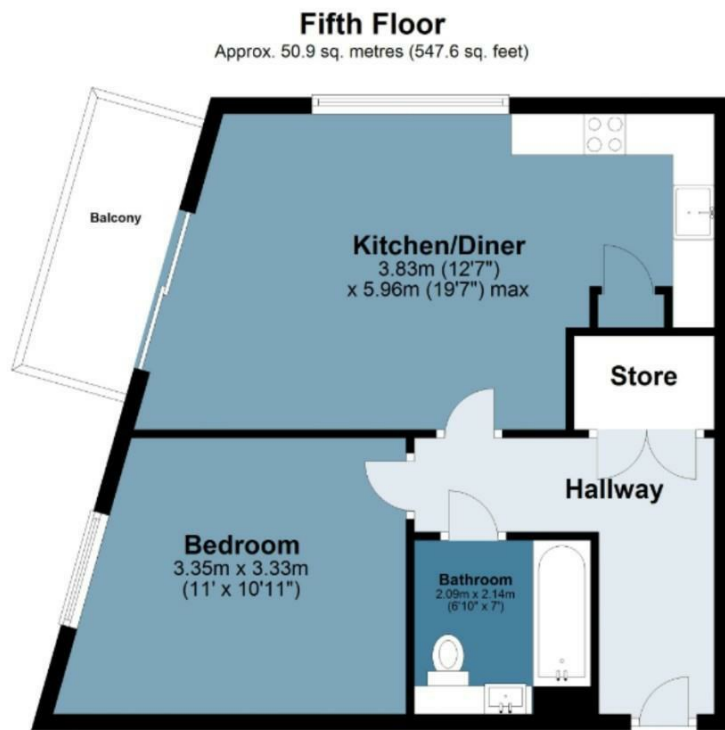




Suntrap Court

Approx. Gross Internal Area 50.9 sq. metres (547.6 sq. feet)

BUTLER & STAG



Measurements are approximate and for illustration purposes only. While we do not doubt the accuracy and completeness, we advise you conduct a careful independent assessment of the property to determine monetary value
© @modephotouk www.modephoto.co.uk

BUTLER & STAG

☎ 020 8102 1236

🏠 508 Roman Road, Bow, London, E3 5LU

✉ bow@butlerandstag.com

IMPORTANT NOTICE - These particulars have been prepared in good faith and they are not intended to constitute part of an offer or contract. We have not performed a structural survey on this property and the services, appliances and specific fittings have not been tested. All photographs, measurements, floor plans and distances referred to are given as a guide and should not be relied upon.

www.butlerandstag.uk